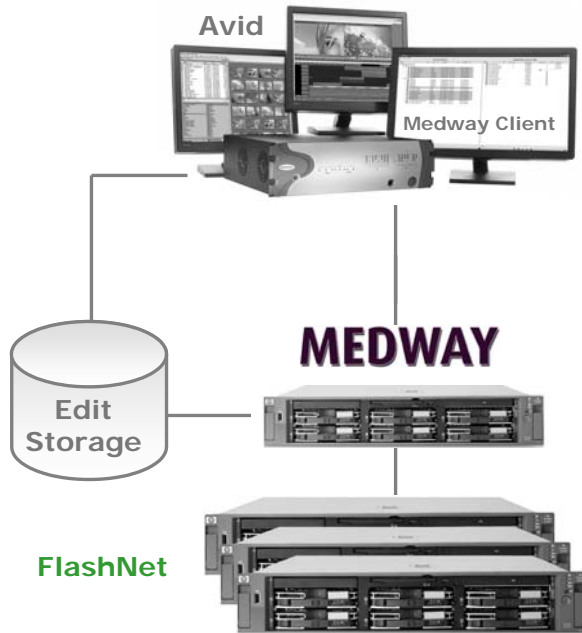


## FlashNet MXF OP1a Archive and Edit Integration



- **Simple & Open standard for archiving "Ready To Air" material**
- **Preserving ability to Re-Edit material as required**

**SGL and Marquis Broadcast** are providing a means to dramatically reduce the cost's of Archive solutions via the integration of their Medway and FlashNet systems. This allows a single copy of the essence to be archived at the highest quality via FlashNet and restored using Medway at the appropriate standard to the various connected systems with the correct metadata.

As both FlashNet and Medway are Enterprise class systems with the ability to have multiple control systems and devices connected they provide a scalable solution which meets the operational and business cost parameters of modern digital facilities.

Export sequences from your Avid editors and store them as flattened single MXF OP1a files within the SGL control archive, ready for use within transmission.

Recall MXF OP1a files from within the SGL system and transfer back into Avid for additional editing work.

The Marquis Medway application allows sequences exported by Avid users to be flattened and wrapped into single MXF files and passed to the SGL system for storing within the archive.

Should an item require additional work within the Avid system, users can push material back to Medway from SGL with Medway re-importing the material into Avid automatically.

# marquis

**MXF Archive Integration with Medway, Avid and SGL**

Improve quality and reduce cost with better access and control of archive contents.

Ensure maximum returns on investment with a powerful and simple integration of Editing Systems and Broadcast Archives

Export Sequences from Avid to an SGL controlled archive.

Restore archive content direct to Avid for Re-Editing

Automatic Flatten of Avid Sequence Exports

Increased efficiency in use of Edit storage

Seamless integration of systems encourages editorial creativity

Easy to use drag and drop interface

Expandable and scalable architecture



**FOR MORE INFORMATION:**

www.sgluk.com  
info@sgluk.com  
Phone: +44 (0)238 023 3322

www.marquisbroadcast.com  
info@marquisbroadcast.com  
Phone: +44 (0)118 984 4111

## The Solution

Complex digital workflows are hampered by expensive and repetitive operations brought on by file incompatibilities. Medway *The Media Highway* from Marquis Broadcast provides a transparent and cost-efficient route to removing these bottlenecks.

Medway provides a universal media exchange between a wide variety of broadcast platforms, carrying out the necessary format conversion invisibly and effortlessly. Medway is compatible with a host of editing systems, video servers and storage, archive and asset management systems, browse and automation systems as well as a rich gamut of broadcast media formats.

Medway transfers both Media and Metadata enabling the whole production process to be maintained in a digital environment. Media is re-wrapped and streamed during its movement and therefore minimal delay is achieved. The need to produce interim files or go out to tape is totally removed thus minimising errors and significantly improving output quality. Furthermore, by allowing 'Metadata' to be moved with its associated media, Medway enhances tracking so that media can never be lost and thus maximising the return on your very expensively produced assets.

### SGL and Medway Integration supported video devices and formats ...

#### Editing Platforms

Avid MediaComposer  
Avid Symphony  
Avid NewsCutter  
Avid Xpress  
(all Avids on PC only)

#### Edit Shared Storage

Local  
Avid, Interplay  
Avid, ISIS  
Avid, Lanshare  
Avid, Unity

#### Archive

**SGL FlashBrowse**  
**SGL FlashBox**

#### Video Standards

625/25 and 525/29.97  
1080i/25, 1080i/29.97,  
720p 29.97

#### Codecs

DV25  
IMX 30, 40 & 50 0Mb/s  
DNxHD 120, 145, 180 & 220

## How to Order

The FlashNet Edit integration is available for sale through the SGL approved reseller network. To purchase please contact your local SGL reseller or to locate a reseller please go to [www.sgluk.com](http://www.sgluk.com)

## What Next?

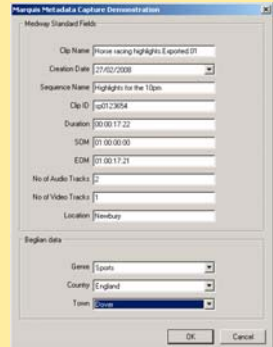
Medway is a flexible and scalable solution that can easily be expanded according to your future requirements. As well as offering SD and HD native support as standard, additional functionality or connectivity can be added to Medway at anytime, enabled by a simple licensing upgrade. For example: -

- Add additional editing seats, editing storage and additional platforms
- Server integration, move files on and off your video server; Omneon, Nexio, SeaChange, EVS, K2 or GFS.
- Media Asset Management integration, manage your Quantum archive with a MAM and tightly integrate with your post production.
- Enhanced operation with video format Transcoding, multiple transfers for faster throughput, connect to removable media such as P2 or XDCAM, or add external automation control.

## SEND TO ARCHIVE

### Post to Archive with full Metadata

- 1) Export from Edit Platform
- 2) Metadata capture using Medway



- 3) Medway exports a single clip (flattened sequence) to a *Medway to Archive* shared folder on a server, as an MXFop1a.
- 4) New file is detected and initiates archive process.
- 5) FlashBrowse creates a proxy and adds to database.
- 6) FlashNet moves file to archive deleting file from shared folder.

## RESTORE FROM ARCHIVE

### Browse file lists and drag and drop to Avid and FCP

- 7) Restore initiated from automation, MAM or directly from the FlashBrowse interface.
- 8) FlashNet restores MXF file to *Archive to Medway* folder.
- 9) Medway configured to 'autotransfer' from shared folder to editing platform.
- 10) User drags clips from Medway interface into bin.