

# marquis



## Project Parking and Workspace Tools

Version 8 highlights

Simon Fearn | January 2025



## New features of Project Parking version 8

### Project analysis: display projects that share media

The storage analysis within Project Parking identifies the media files in use within each project and then conducts many subsequent actions based on this information.

Project Parking has allowed functions such as the Project Sweep and Project Delete to remove content that is uniquely reference by a project while leaving in place content that is shared with other projects. Previously, the application made use of this information within the background processing but did not show the shared usage information to the user. Project Parking v8 introduces an extension to the Project Analysis tab to show this information.

Within the top right section of the application, the 'Files By Age' panel now includes an additional tab marked 'Shared Media':

Project	File count	File Size
Lions_PP	9	359 MB
Many Files 1	9	359 MB
aa Share Test	3	87.1 MB
aa Share Test	3	87.1 MB
LA_NY Share Test	3	87.1 MB
Bin Selection Example	4	18.8 MB
Remote Sync Test 1	1	28.6 MB

Project Analysis

This contains a list of all the projects that are sharing media with the current project.

Selecting a project will allow the user to switch the application to the project analysis of that project using the activated button below.

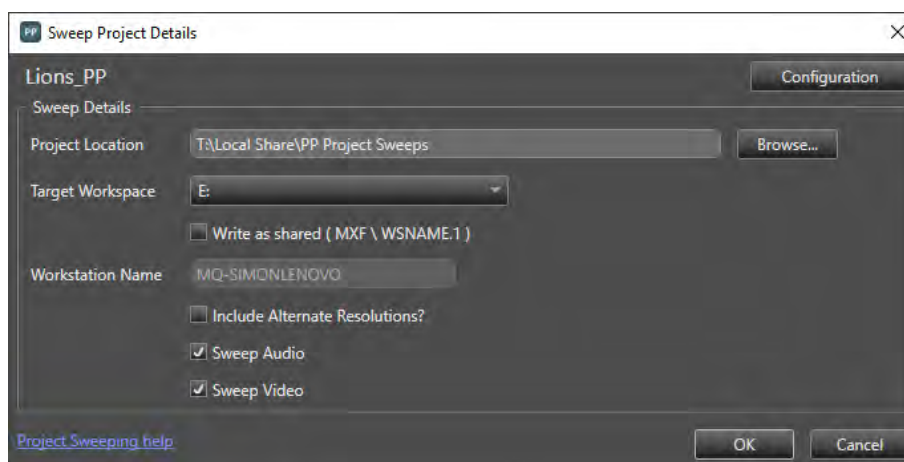
Project	File count	File Size
Lions_PP	9	359 MB
Many Files 1	9	359 MB
aa Share Test	3	87.1 MB
aa Share Test	3	87.1 MB
LA_NY Share Test	3	87.1 MB
Bin Selection Example	4	18.8 MB
Remote Sync Test 1	1	28.6 MB

Project Analysis

## Project sweep: control essence types swept (audio/video)

The Project Sweep function within Project Parking allows users to remove content from the source Avid system. This function has always removed all the uniquely referenced essence files from the source system; both video and audio.

New within version 8, Project Sweep will now allow the user to choose if they want to remove both video and audio, or just one of the two. The Project Sweep job allows this to be set for each sweep job, allowing for users to choose what to sweep on a job-by-job basis.



For example, selecting Sweep Audio will see Project Parking sweep any uniquely referenced audio essence files from the source system, while leaving the video essence files in place.

Note: This option is enabled within the 'Configuration > Sweep & Delete' section by enabling the following option:

Allow sweeping by content type  You will need to run a Storage Analysis before any other jobs!

As in the current release, the storage analysis needs to be up to date before processing a Project Sweep.



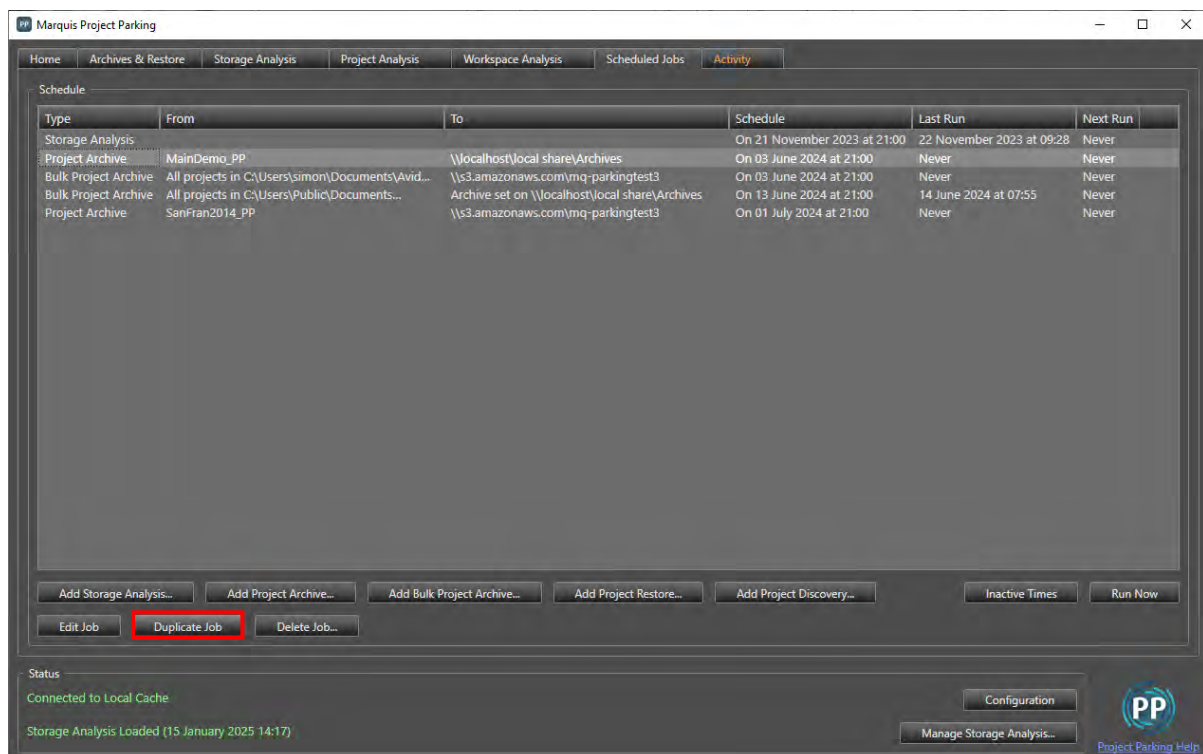
## Job logging: additional detail on shared content in delete/sweep jobs

Linked to the previous two features, Project Parking v8 is now capturing and showing more information within the job console and logs regarding media not deleted or swept because it is shared with other projects.

At the end of each job, the console (and the log) will show a summary of any content that has not been removed and list the other projects that are sharing the content. This information can then be investigated within the Project Analysis page using the new feature for shared media analysis.

## Scheduled jobs: duplicate existing jobs

Project Parking v8 adds the ability to duplicate an existing job and reuse the base configuration that has already been set up.



This will be particularly useful for jobs that have been set up with a complicated set of additional configuration options.

For example, if a Project Archive job uses a number of additional directories, and these are common across multiple projects, the existing job can effectively be used as a template for future jobs by duplicating the job and making the necessary changes.

## Archive projects that only use AMA content

For many years, Project Parking has given users the option to archive projects that contained AMA linked media. Previously, this was only supported when the AMA content was used in addition to other imported Avid media. Project Parking was not able to work with projects that only included AMA linked media.

Project Parking v8 now includes the ability to work with projects that only use AMA linked media. These projects will operate identically to other projects and can be archived and restored as normal.

Note: Remember to enable the Include 'AMA files' option in the Archive Details dialogue to enable the copy of the linked media into the archive. This can also be set as the default behaviour by enabling the 'Archive AMA files referenced by projects' option in 'Configuration > General' section.

## Significant analysis performance improvement

As part of our continuous improvement of the performance of our products, the behaviour of our Storage Analysis has been reviewed to try and find methods to reduce the time of the analysis job.

Within version 8 we have updated the management of calls between the application and the storage analysis database to improve the efficiency of actions during the post processing phase. This streamlines the process and should see performance gains for customers that have large and complex source system.

## Default workstation for project restores

The Project Restore job allows the setting of an Avid Workstation ID that can be used to set the folder naming conventions within Avid shared storage systems (Non-Production Asset Management systems) to ensure Media Composer can index the restored content.

This setting was previously made per restore job and defaulted to the machine name of the current Project Parking host.

This value can now be given a global default setting within "Configuration > Advanced" that will be applied on all jobs. This is especially useful for systems where Project Parking is hosted on a centralised server.

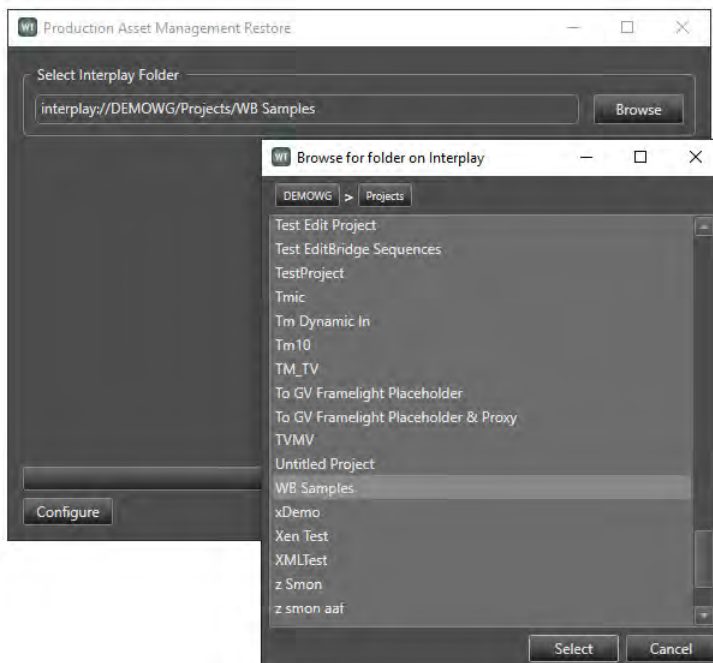
The setting can still be changed manually within each Project Restore job if required.



## New features of Workspace Tools version 8

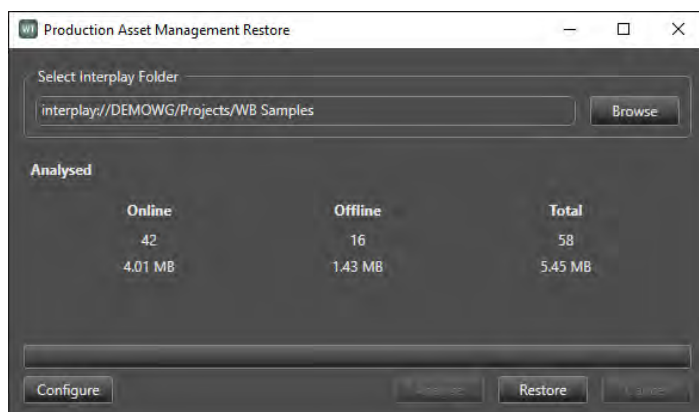
### Production Asset Management (PAM) restore

Version 8 of Workspace Tools includes an additional tool for expedited restores from a Workspace Backup. Production Asset Management (PAM) Restore is a stand-alone application that will allow assets within the Avid Production Asset Management systems that have missing media to restore the media directly from the backup. Users will therefore be able to restore exactly what they require from the backup.



PAM Restore will allow the database to be navigated through and a folder/project to be chosen by the user.

The application will then analyse the Avid information to look for any assets with offline media.



It will then check if those assets are held within the backup and restore them directly to the Avid storage.

The Assets will then come back online as soon as the media files are restored.

PAM Restore is freely available to all users of Workspace Tools v8 and can be installed on any machine as required, allowing for the greatest flexibility when restoration is required.

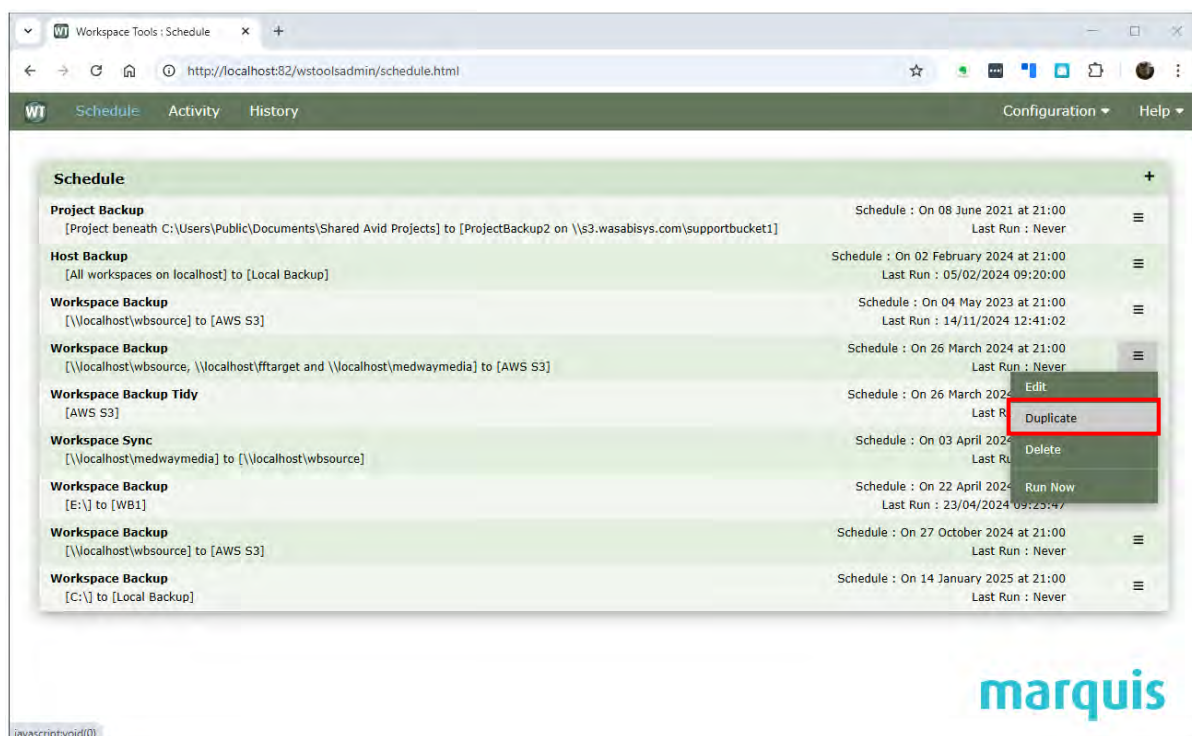
## Backup projects that only use AMA content

Workspace Tools v8 will now allow Workspace Backups to capture project files that reference only AMA linked media and include them within the backup with full version control. In previous versions, these projects would be backed up as standard files without any version management.

These projects can now be used as standard projects within the Project Restore application and will appear in the standard project list and have full version histories.

## Scheduled jobs: duplicate existing jobs

Workspace Tools v8 adds the ability to duplicate an existing job and reuse the base configuration that has already been set up.



This will be particularly useful for jobs that have been set up with a complicated set of additional configuration options. For example, if a job is built up with a complex set of exclusions, it can be used as a template and duplicated as needed for additional jobs.



## Significant analysis performance improvement

As part of our continuous improvement of the performance of our products, the behaviour of our Storage Analysis has been reviewed to try and find methods to reduce the time of the analysis job.

Within version 8, we have updated the management of calls between the application and the storage analysis database, improving the efficiency of actions during the post processing phase. This streamlines the process and should see performance gains for customers with large and complex source systems.

## Default workstation for Project Restores

The Project Restore job allows the setting of an Avid Workstation ID that can be used to set the folder-naming conventions within Avid shared storage systems (non-Production Asset Management systems) to ensure Media Composer can index the restored content.

This setting was previously made per restore job and defaulted to the machine name of the current Project Parking host.

This value can now be given a global default setting within 'Configuration > Advanced' that will be applied on all jobs. This is especially useful for systems where Project Parking is hosted on a centralised server.

The setting can still be changed manually within each Project Restore job if required.

For further information on these product developments,  
or if you have any projects you wish to discuss,  
please contact [info@marquisbroadcast.com](mailto:info@marquisbroadcast.com).



[marquisbroadcast.com/projectparking](https://marquisbroadcast.com/projectparking)



[marquisbroadcast.com/workspacetools](https://marquisbroadcast.com/workspacetools)